

# ARABIAN RANCHES III

---

SPRING

FLOOR PLANS

**EMAAR**

# ARABIAN RANCHES III

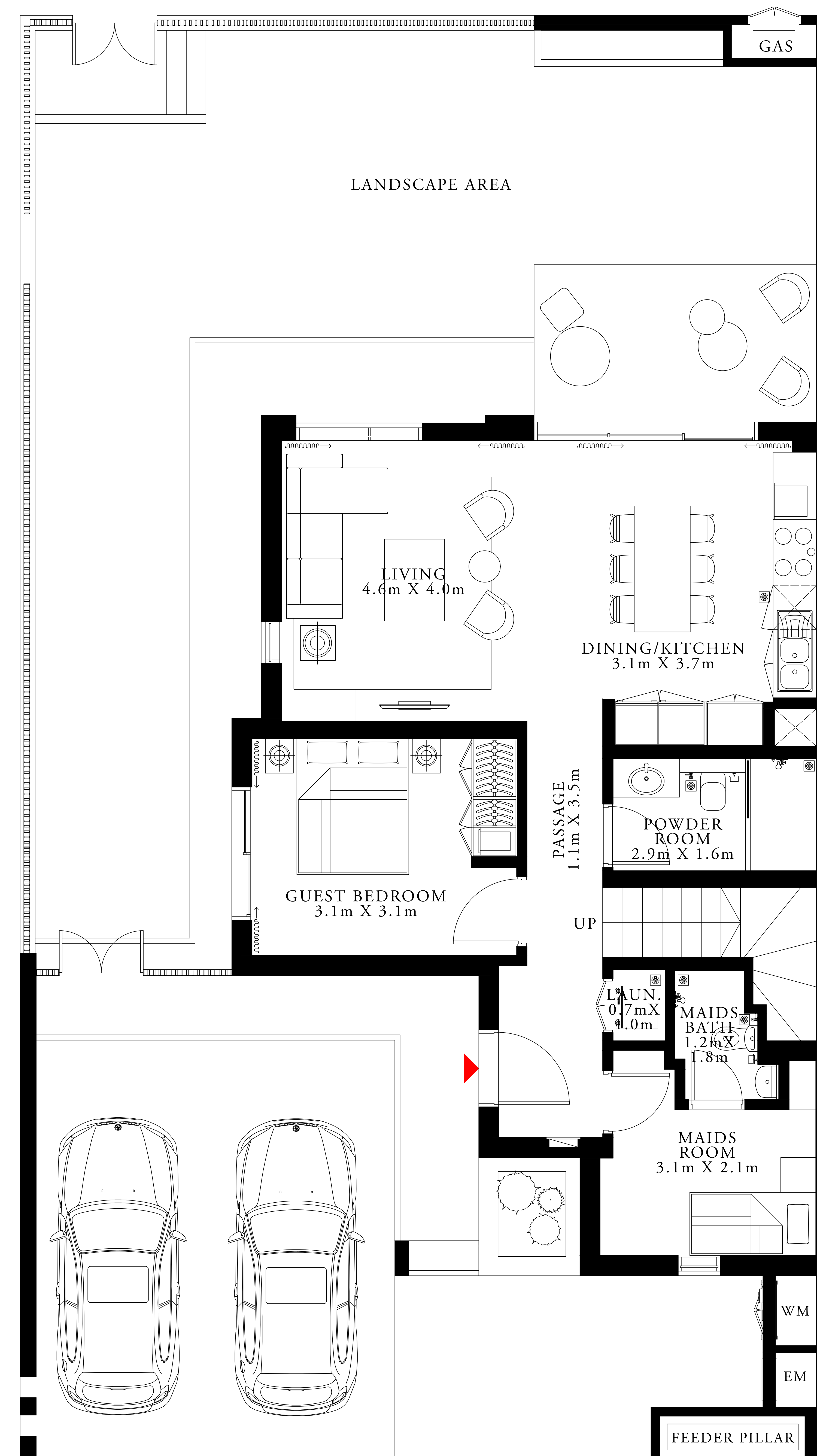
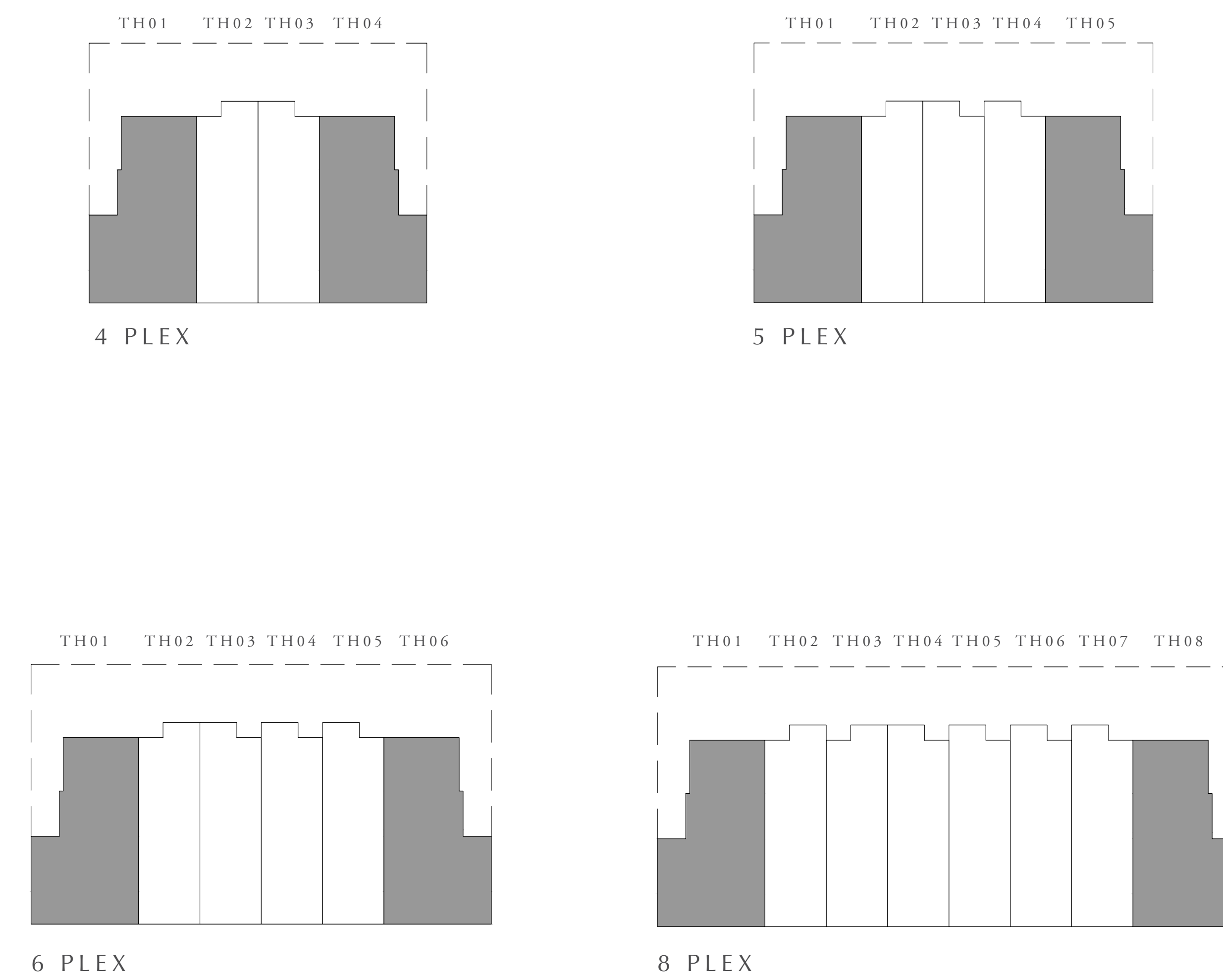
SPRING

## 4 BEDROOM

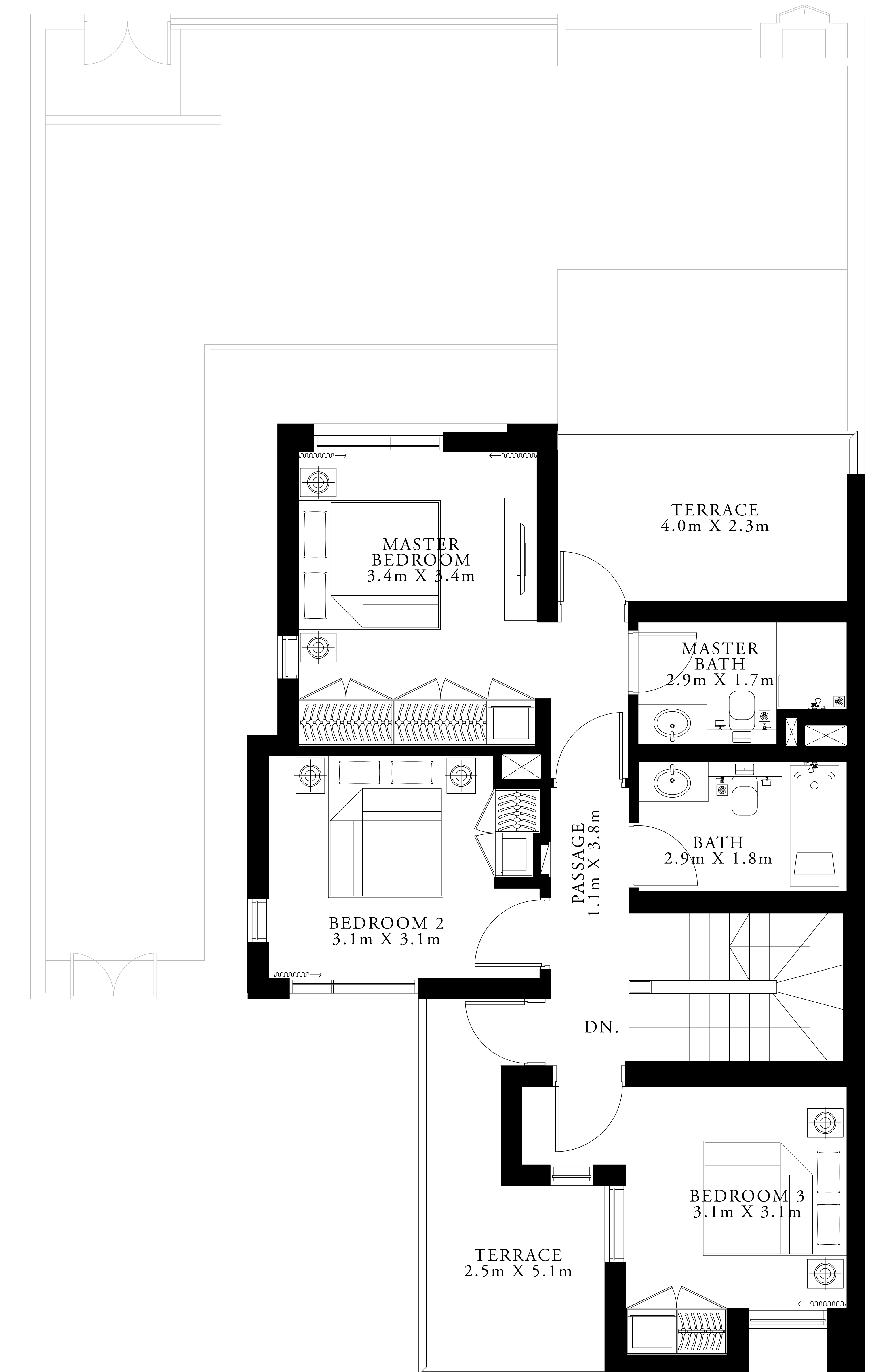
TYPE 6

UNIT	TOTAL AREA	
4 PLEX - TH01	2583.55 SQ.FT.	240.02 SQ.M.
4 PLEX - TH04		
5 PLEX - TH01		
5 PLEX - TH05		
6 PLEX - TH01		
6 PLEX - TH06		
8 PLEX - TH01		
8 PLEX - TH08		

### KEY PLAN



GROUND FLOOR



FIRST FLOOR

FLOOR PLAN 1. All dimensions are in imperial and metric, and measured from finish to finish excluding construction tolerances. 2. All materials, dimensions, and drawings are approximate only. 3. Information is subject to change without notice, at developer's absolute discretion. 4. Actual area may vary from the stated area. 5. Drawings not to scale. 6. All images used are for illustrative purposes only and do not represent the actual size, features, specifications, fittings, and furnishings. 7. The developer reserves the right to make revisions / alterations, at it's absolute discretion, without any liability whatsoever.

# ARABIAN RANCHES III

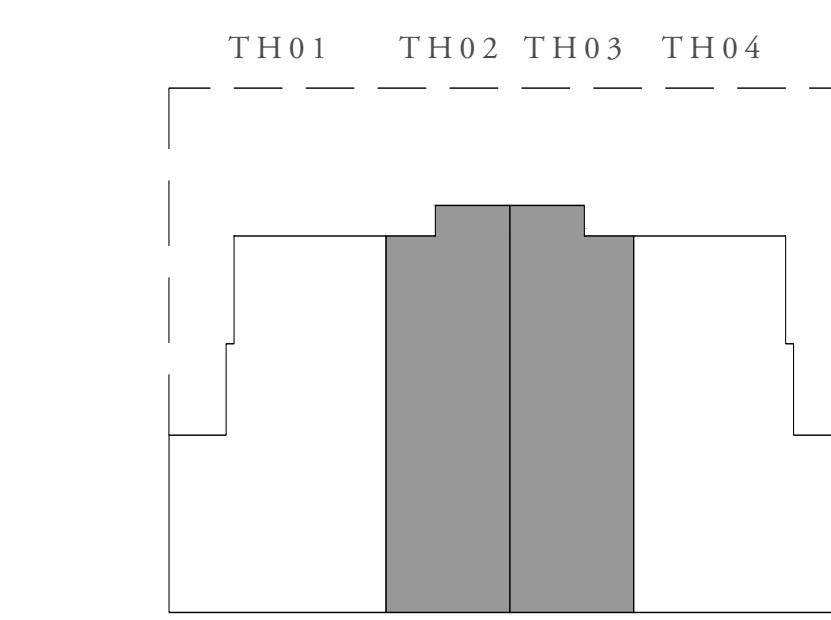
SPRING

## 3 BEDROOM

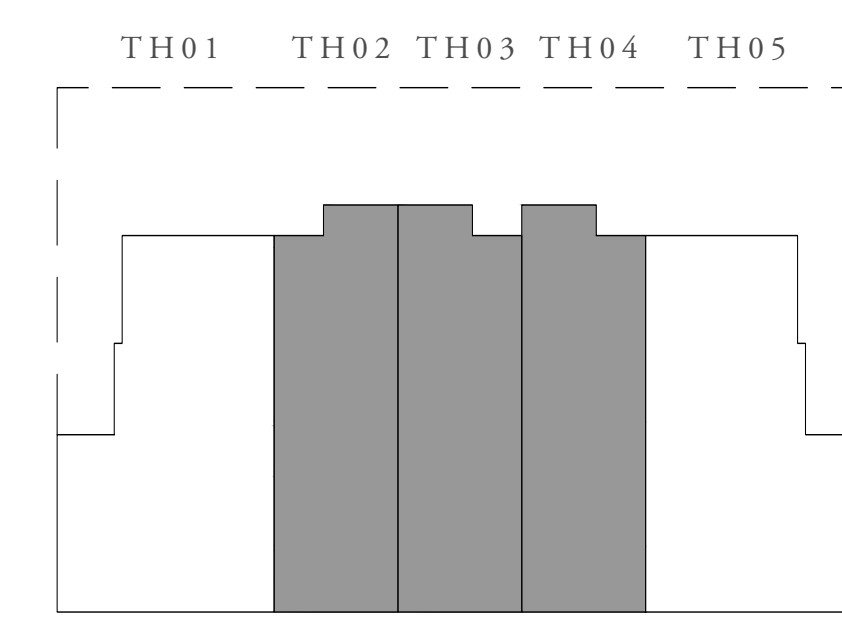
TYPE 6

UNIT	TOTAL AREA	
5 PLEX - TH03	1941.16 SQ. FT.	180.34 SQ. M.
4 PLEX - TH02	1941.70 SQ. FT.	180.39 SQ. M.
5 PLEX - TH02		
5 PLEX - TH04		
6 PLEX - TH02	1942.02 SQ. FT.	180.42 SQ. M.
6 PLEX - TH05		
8 PLEX - TH02		
8 PLEX - TH07		
8 PLEX - TH03		
8 PLEX - TH04	1942.89 SQ. FT.	180.50 SQ. M.
8 PLEX - TH05		
8 PLEX - TH06		
6 PLEX - TH03	1943.42 SQ. FT.	180.55 SQ. M.
6 PLEX - TH04		

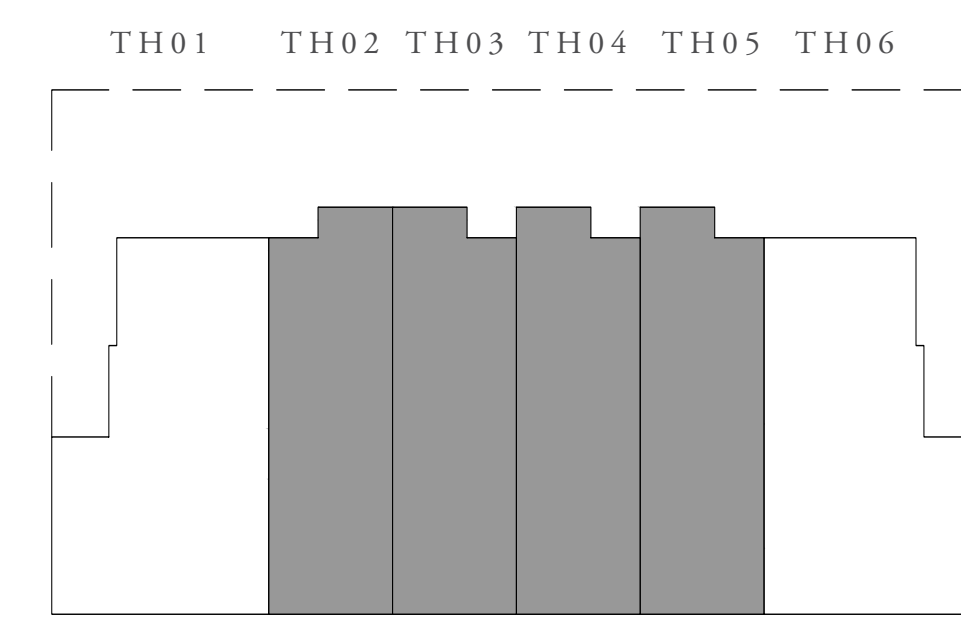
### KEY PLAN



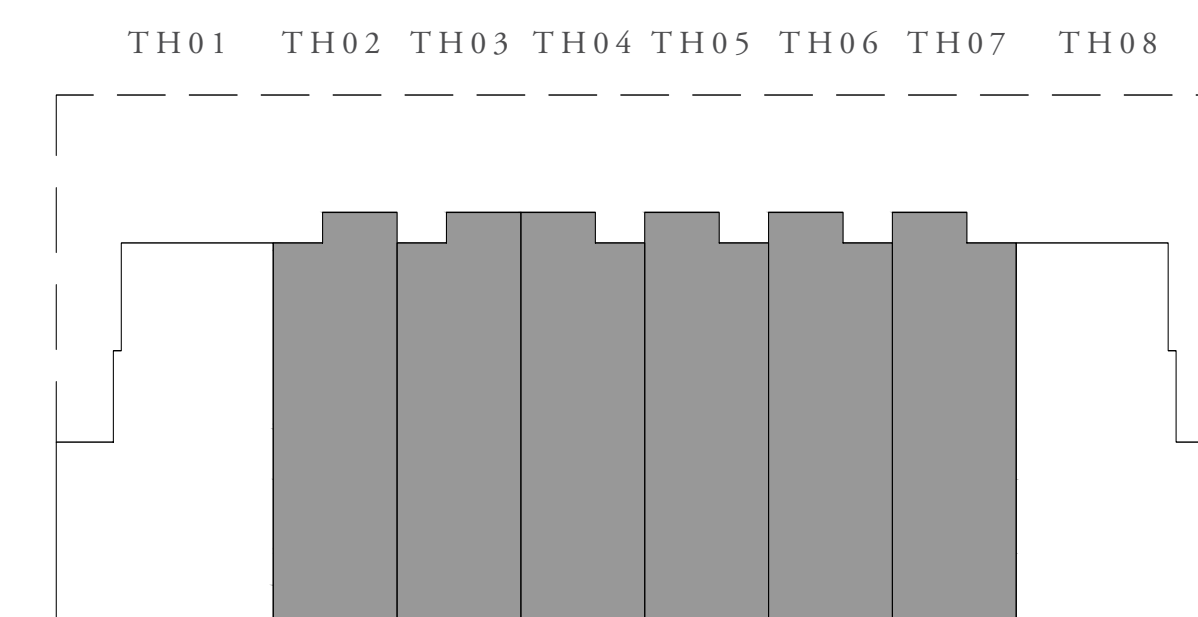
4 PLEX



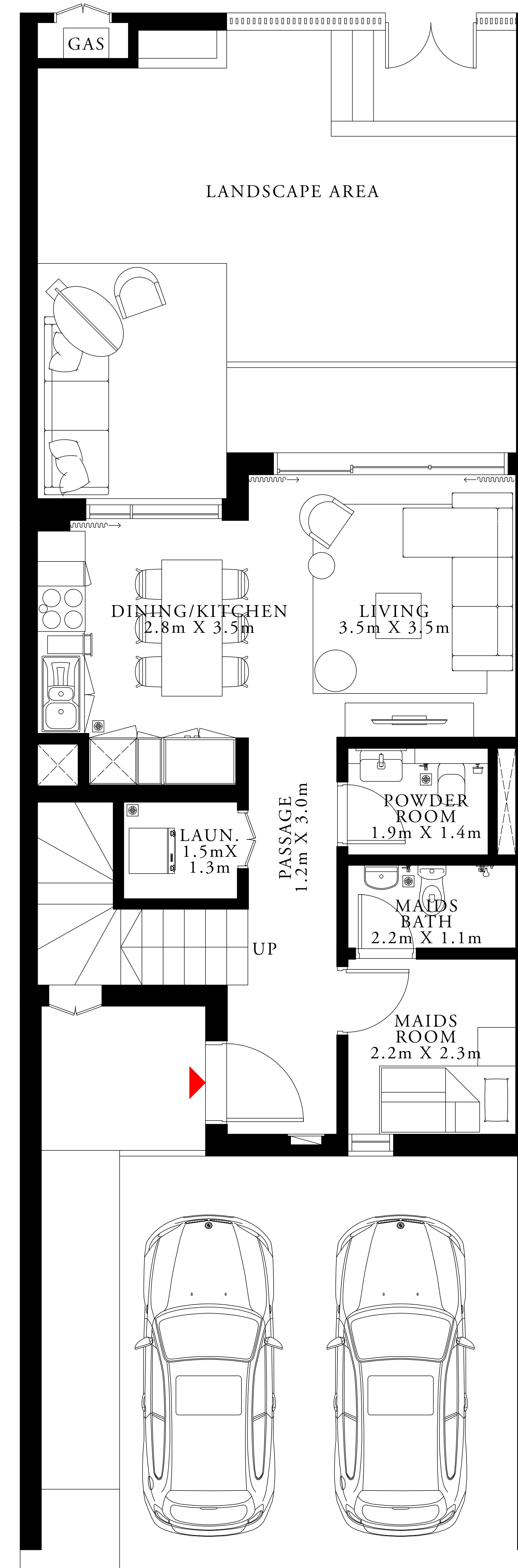
5 PLEX



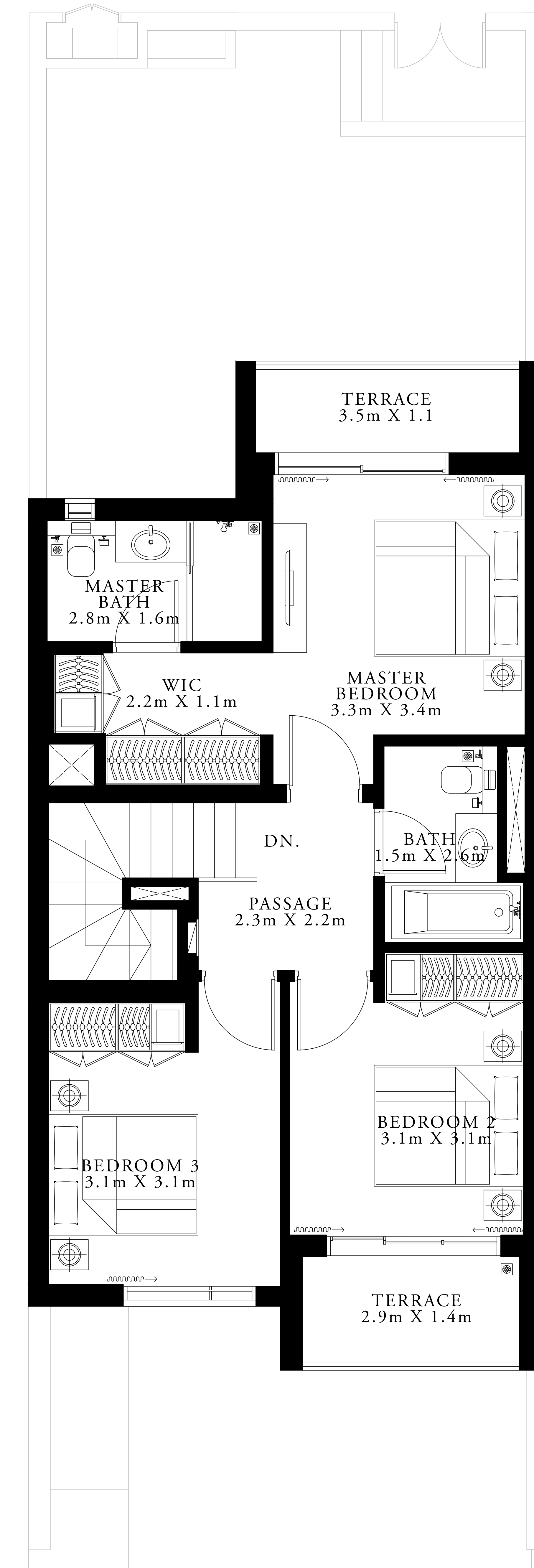
6 PLEX



8 PLEX



GROUND FLOOR



FIRST FLOOR

FLOOR PLAN 1. All dimensions are in imperial and metric, and measured from finish to finish excluding construction tolerances. 2. All materials, dimensions, and drawings are approximate only. 3. Information is subject to change without notice, at developer's absolute discretion. 4. Actual area may vary from the stated area. 5. Drawings not to scale. 6. All images used are for illustrative purposes only and do not represent the actual size, features, specifications, fittings, and furnishings. 7. The developer reserves the right to make revisions / alterations, at its absolute discretion, without any liability whatsoever.



 **056 650 6590**  
 [marketing@homes4life.ae](mailto:marketing@homes4life.ae)

Office 25 | Oasis Center | Sheikh Zayed Road | Dubai | UAE | P.O. Box 34542